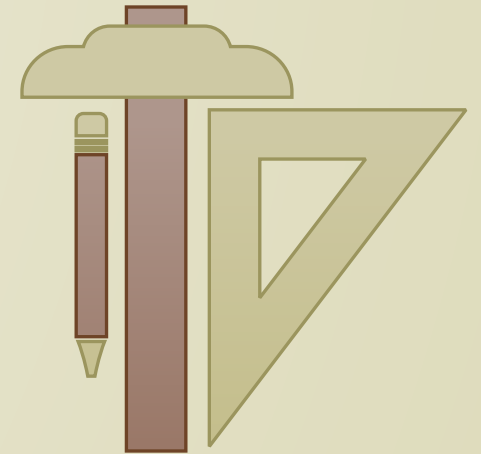
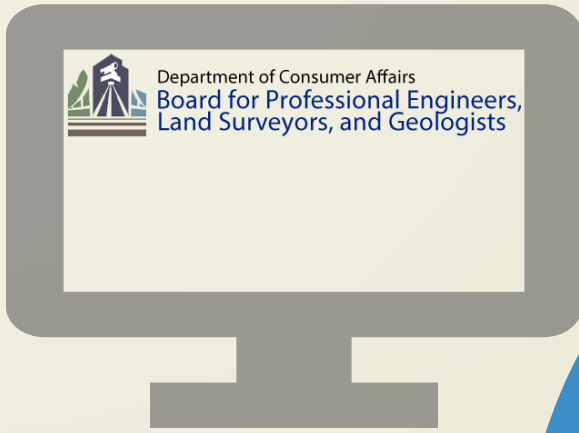


Costs Towards Becoming a Licensed Professional



Investment



~100+ Hours



RANGE CHANGE

Engineering Geologist Series

- Engineering Geologist
- Senior Engineering Geologist *
- Supervising Engineering Geologist *

Water Resource Control Engineer Series

- Water Resource Control Engineer
- Senior Water Resource Control Engineer*
- Supervising Water Resource Control Engineer (Supervisory)*
- Principal Water Resource Control Engineer*

* Requires a
Professional License

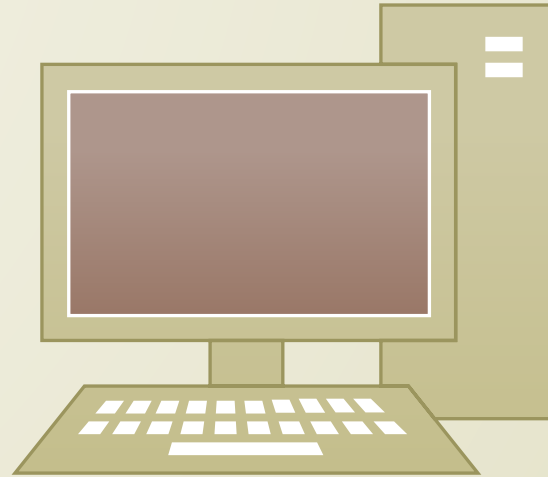


Learning Resources

PECG



RIVER CITY



\$\$\$
BACK

<https://pecgrivercity.org/committees/learning-resources/>

